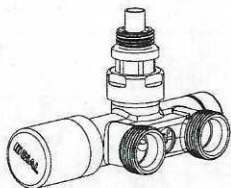


**RADIATORSKI VENTILI  
RADIATOR VALVES  
HEIZKÖRPERVENTILE**

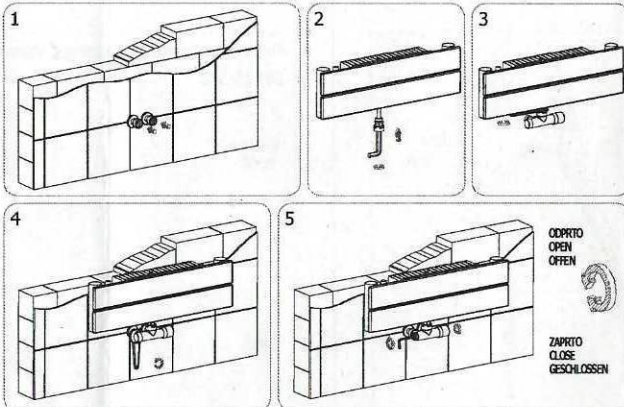


**SL**  
VENTIL S SREDINSKI ZA DVO IN ENOCEVNI SISTEM  
Ventil s potopno cevjo, kotni ali ravni priključ, za priključitev na bakreno ali plastično cev. Razmik med priključki 40 ali 50 mm.  
Tehnične karakteristike  
Max. statični delovni tlak: 10 bar  
Max. delovna temperatura: 110 °C  
Max. diferencialni tlak: 1 bar

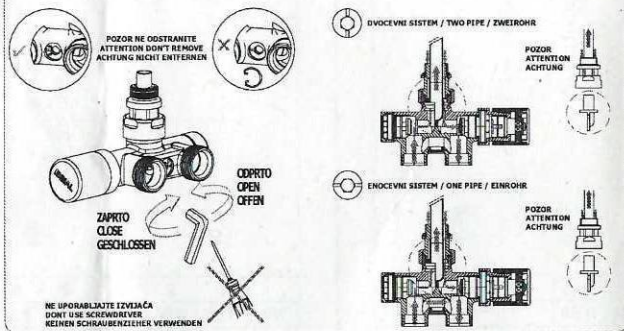
**EN**  
MONO/BITUBE VALVES  
Mono / bitube valve model by-pass, angled or straight version with connections for copper or plastic pipe. Distance between connections 40 or 50 mm.  
Operating features  
Max static operating pressure : 10 bar  
Max operating temperature : 110°C  
Max differential pressure : 1 bar

**DE**  
EINZEL- / ZWEIROHRAUSFÜHRUNG  
Einzel- / Zweirohrausführung mit Bypass, gerade oder Eckform mit Anschlüssen für Kupfer- oder Kunststoffrohre. Länge 40 oder 50 mm.  
Technische Merkmale  
Max statischer Arbeitsdruck : 10 bar  
Max Temperatur : 110°C  
Max Differenzdruck : 1 bar

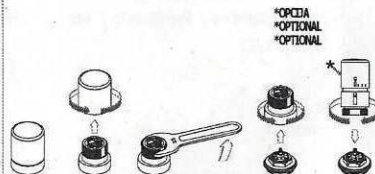
**VGRADNJA  
INSTALLATIONS  
INSTALLATION**



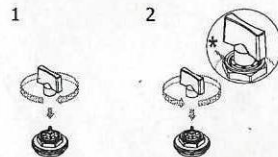
**KONFIGURACIJA  
CONFIGURATION  
KONFIGURATION**



**TERMOSTATSKA GLAVA  
THERMOSTATIC HEAD  
THERMOSTATKOPF**



**PREDNASTAVITEV  
PRESETTING  
VOREINSTELLUNG**

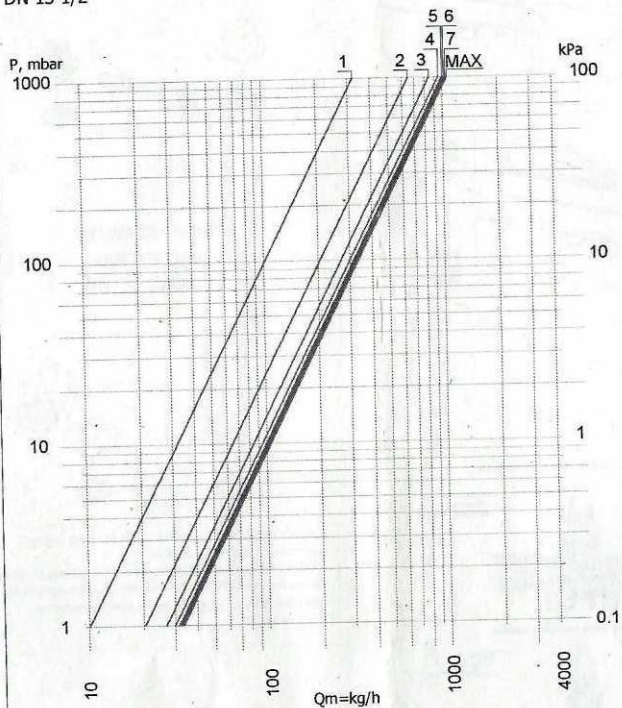


1. Zaprite prednastavljeno zapiralo / Close presetting ring nut / Den voreingestellten Ring schließen;
2. Odprite zapiralo in ga ponastavite na eno izmed številic (\*) / Open the ring and make the index coincide with one of the numbers (\*) / Öffnen Sie den Ring, um den Index mit einer der Nummern abzustimmen (\*);



**DVOCEVNI SISTEM / TWO PIPE / ZWEIROHR**

Prednastavitev / Presetting / Voreinstellung  
DN 15 1/2"

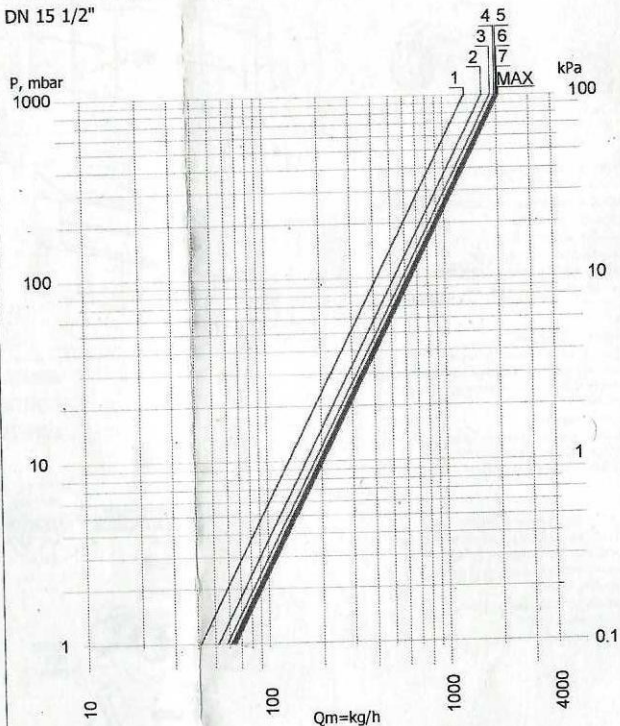


	1	2	3	4	5	6	7	Kvs
Kv	0.32	0.65	0.85	0.95	1.00	1.02	1.04	1.06



**ENOCEVNI SISTEM / ONE PIPE / EINROHR**

Prednastavitev / Presetting / Voreinstellung  
DN 15 1/2"



	1	2	3	4	5	6	7	Kvs
Kv	1.32	1.65	1.85	1.95	2.00	2.02	2.04	2.06